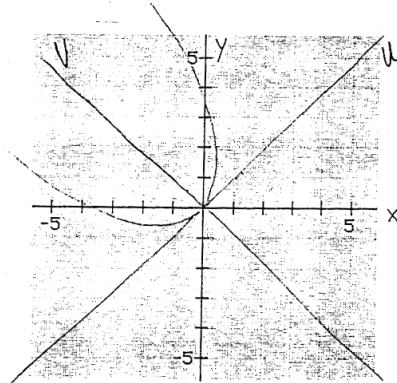


Math 141-142
 Fall 1999
 Analytic Geometry Final Exam Answers

1. $(-3, 3\sqrt{3})$
2. $x = \frac{3}{2}$
3. $2e^{-\frac{5\pi i}{6}}$
4. $(\pm\sqrt{10}, 0)$
5. $y = \frac{x^2}{4} - 1$
6. 8
7. $\frac{\pi}{6}$
8. $(2, -2)$
9. (a) $\sqrt{2}e^{\frac{\pi i}{4}}$ (b) -1024
10. $x^2 + y^2 = 4$
- 11.



12. c,b,d,a
13. d,a,b,c
14. $\frac{(x-1)^2}{4} + \frac{(y+2)^2}{9} = 1$
15. $1 + \sqrt{3}i, -\sqrt{3} + i, -1 - \sqrt{3}i, \sqrt{3} - i$
 graph:

